

Terrain Height Tutorial

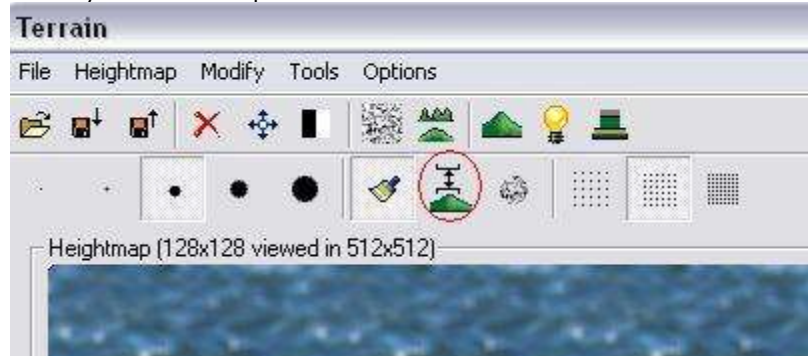
Author: CryGen

1) There are a few ways that this is possible, i am just going to take you through the first one which seems simple, from here you will learn the other methods quite quick.

2) Start off by opening the terrain menu.



3) Once you click there you should be presented with a screen which looks some what like this:



4) Select the "Set To Height" option shown above, then you will see this:



5) The default value is 0, this being under the water at a pretty big depth. The get the ground just above the water, i use 16.5 or 17 as they get the ground just above and it looks nice.

6) For this example we will use 17, press ok. Now are are back to the screen shown in step 3. Now all you need to do now is on the blue area (the water) hold down your left mouse button and move where you want the ground to be just above the water.

7) You can adjust the size of how much you shade at a time by selecting the different size circles.

8) Once you are happy with your outcome, press ok and your island should look similar to the one shown.

